

# *Makeup Artist Looks*

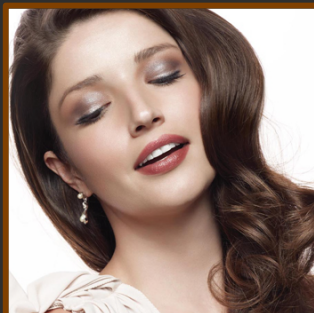
*Eight Sensational Ideas*

# *Model Portfolio*

Luxurious looks for every  
moment of your life.



Everyday



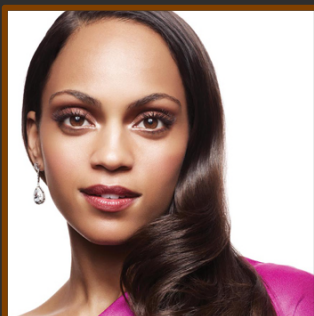
Glamorous Anytime



Party



Casual



Special Celebration



Smoldering Lip



Vibrant Beauty



Glowing Skin

**Before**

3" X 5" works best

**After**

3" X 5" works best

Accessible neutrals and simple styling make this a beautiful choice for an everyday look.

**FOR EYES:**

Sweep **Amber Blaze mineral eye color** all over the eyelids. Add **Espresso mineral eye color** to the outer corners and blend into the creases. Apply **Golden Vanilla mineral eye color** under brow bones.

Line eyes with **Deep Brown eyeliner** and smudge. Apply **Mary Kay® Ultimate Mascara™** in **Black/Brown**.

**FOR CHEEKS:**

Sweep **Sparkling Cider mineral cheek color** onto the apples of the cheeks.

**FOR LIPS:**

Line lips with **Neutral lip liner**. Apply **NEW Mary Kay® True Dimensions™ Lipstick** in **Natural Beauté** to entire lip area. Finish with **Pink Sateen lip gloss**.

**The Everyday Look**

MODEL NAME \_\_\_\_\_

OCCUPATION \_\_\_\_\_

PHONE \_\_\_\_\_ HOME  
\_\_\_\_\_ WORK  
\_\_\_\_\_ CELL

BEST TIME TO CALL \_\_\_\_\_

Email \_\_\_\_\_

HAIR COLOR \_\_\_\_\_

EYE COLOR \_\_\_\_\_

SKIN TYPE: combination - oily - dry

**Before**

3" X 5" works best

**After**

3" X 5" works best

Smoky eyes and luminous skin make this an alluring look for glamorous occasions.

**FOR EYES:**

Brush on **Granite mineral eye color** all over eyelids. Add **Midnight Star mineral eye color** to the outer corners and blend into the creases. Apply **Honey Spice mineral eye color** under the brow bones.

Line eyes with **Black eyeliner** and smudge.

Brush on **Lash Love® Mascara in I ♥ Black**.

**FOR CHEEKS:**

Sweep **Cherry Blossom mineral cheek color** onto the apples of the cheeks.

**FOR LIPS:**

Apply **Amber Suede creme lipstick** to entire lip area, then top with **Café au Lait lip gloss**.

**The Glamorous Anytime**

MODEL NAME \_\_\_\_\_

OCCUPATION \_\_\_\_\_

PHONE \_\_\_\_\_ HOME  
\_\_\_\_\_ WORK  
\_\_\_\_\_ CELL

BEST TIME TO CALL \_\_\_\_\_

Email \_\_\_\_\_

HAIR COLOR \_\_\_\_\_

EYE COLOR \_\_\_\_\_

SKIN TYPE: combination - oily - dry

**Before**

3" X 5" works best

**After**

3" X 5" works best

Make your party makeup pop with the ideal bold lip and pair it with a glamorous smoky eye.

**FOR EYES:**

Brush on **Truffle mineral eye color** all over the eyelids. Add **Silver Satin mineral eye color** to the inner corners. Apply **Gold Coast mineral eye color** under the brow bones.

Line eyes with **Black liquid eyeliner**, then sweep **Silver Satin mineral eye color** over it.

Brush on **Mary Kay® Lash Love® Mascara in I ♥ Black**.

**FOR CHEEKS:**

Sweep **Sunny Spice mineral cheek color** onto cheeks.

**FOR LIPS:**

Apply **NEW Mary Kay® True Dimensions™ Lipstick in Firecracker**. Finish with **Rock 'n' Red lip gloss**.

**The Party Look**

MODEL NAME \_\_\_\_\_

OCCUPATION \_\_\_\_\_

PHONE \_\_\_\_\_ HOME  
\_\_\_\_\_ WORK  
\_\_\_\_\_ CELL

BEST TIME TO CALL \_\_\_\_\_

Email \_\_\_\_\_

HAIR COLOR \_\_\_\_\_

EYE COLOR \_\_\_\_\_

SKIN TYPE: combination - oily - dry

**Before**

3" X 5" works best

**After**

3" X 5" works best

Go casual with this simple, but sophisticated look that's relaxed without seeming underdone.

**FOR EYES:**

Brush on **Beach Blonde** cream eye color all over eyelids.  
Layer on **Hazelnut** mineral eye color on the lids for depth.  
Apply **Honey Spice** mineral eye color under the brow bones.

Line eyes with **Bronze** eyeliner.

Brush on **Mary Kay® Lash Love® Mascara** in I ♥ Black.

**FOR CHEEKS:**

Sweep **Shy Blush** mineral cheek color onto cheeks.

**FOR LIPS:**

Apply **NEW Mary Kay® True Dimensions™ Lipstick** in **Color Me Coral** to lips.

**The Casual Look**

MODEL NAME \_\_\_\_\_

OCCUPATION \_\_\_\_\_

PHONE \_\_\_\_\_ HOME  
\_\_\_\_\_ WORK  
\_\_\_\_\_ CELL

BEST TIME TO CALL \_\_\_\_\_

Email \_\_\_\_\_

HAIR COLOR \_\_\_\_\_

EYE COLOR \_\_\_\_\_

SKIN TYPE: combination - oily - dry

**Before**

3" X 5" works best

**After**

3" X 5" works best

Head to the events of the season looking simply stunning in shades of dusky purples and accented by luscious lips.

**FOR EYES:**

Apply **Honey Spice mineral eye color** to the inner corner of eye and **Truffle mineral eye color** to the outer corner of the eye. Apply **Sweet Plum mineral eye color** in the crease and blend outward and upward; sweep along the bottom lashlines.

Apply **Black eyeliner** to the upper lashlines, then smudge.

Brush on **Ultimate Mascara™ in Black**.

**FOR CHEEKS:**

Sweep **Dark Cherry mineral cheek color** onto cheeks.

**FOR LIPS:**

Apply **Fuchsia creme lipstick** to lips.

**The Special Celebration Look**

MODEL NAME \_\_\_\_\_

OCCUPATION \_\_\_\_\_

PHONE \_\_\_\_\_ HOME  
\_\_\_\_\_ WORK  
\_\_\_\_\_ CELL

BEST TIME TO CALL \_\_\_\_\_

Email \_\_\_\_\_

HAIR COLOR \_\_\_\_\_

EYE COLOR \_\_\_\_\_

SKIN TYPE: combination - oily - dry

**Before**

3" X 5" works best

**After**

3" X 5" works best

Glide on the look of confidence with color-infused luxury for your lips.

**FOR EYES:**

Sweep on **Crystalline mineral eye color** all over the eyelids and under the brow bones. Next, apply **Precious Pink mineral eye color** to the creases. Finish by applying **Honey Spice mineral eye color** to the outer corners and blend into the creases.

Apply **Black eyeliner** to upper and lower lashlines.

Brush on **Mary Kay® Ultimate™ Mascara in Black**.

**FOR CHEEKS:**

Sweep **Shy Blush mineral cheek color** onto cheeks.

**FOR LIPS:**

Apply **NEW Mary Kay® True Dimensions™ Lipstick in Firecracker**.

## The Smoldering Lip Look

MODEL NAME \_\_\_\_\_

OCCUPATION \_\_\_\_\_

PHONE \_\_\_\_\_ HOME  
\_\_\_\_\_ WORK  
\_\_\_\_\_ CELL

BEST TIME TO CALL \_\_\_\_\_

Email \_\_\_\_\_

HAIR COLOR \_\_\_\_\_

EYE COLOR \_\_\_\_\_

SKIN TYPE: combination - oily - dry

**Before**

3" X 5" works best

**After**

3" X 5" works best

Eyes are vibrant and playful, while cheeks are radiant looking with a warm glow.

**FOR EYES:**

Apply **Sweet Cream mineral eye color** to upper brow bones. Apply **Silver Satin mineral eye color** to inner corners of the eyes. Then sweep **Sweet Plum mineral eye color** onto the entire eyelid.

Line lower lashlines with **Silver Satin mineral eye color**.

Brush on **Mary Kay® Lash Love® Mascara in I ♥ Black**.

**FOR CHEEKS:**

Sweep **Cherry Blossom mineral cheek color** onto cheeks.

**FOR LIPS:**

Apply **NEW Mary Kay® True Dimensions™ Lipstick in Mystic Plum** to lips.

**The Vibrant Beauty Look**

MODEL NAME \_\_\_\_\_

OCCUPATION \_\_\_\_\_

PHONE \_\_\_\_\_ HOME  
\_\_\_\_\_ WORK  
\_\_\_\_\_ CELL

BEST TIME TO CALL \_\_\_\_\_

Email \_\_\_\_\_

HAIR COLOR \_\_\_\_\_

EYE COLOR \_\_\_\_\_

SKIN TYPE: combination - oily - dry



**Before**

3" X 5" works best

**After**

3" X 5" works best

Subdued shades create a fresh, luminous look.

**FOR EYES:**

Apply **Beach Blonde cream eye color** to entire eyelids.

Line upper lashlines with **Soft Black brow definer pencil**.

Brush on **Mary Kay® Lash Love® Mascara in I ♥ Black**.

**FOR CHEEKS:**

Brush cheeks with **mineral highlighting powder in Pink Stardust**.

**FOR LIPS:**

Apply **Fancy Nancy lip gloss** to lips.

## The Glowing Skin Look

MODEL NAME \_\_\_\_\_

OCCUPATION \_\_\_\_\_

PHONE \_\_\_\_\_ HOME  
\_\_\_\_\_ WORK  
\_\_\_\_\_ CELL

BEST TIME TO CALL \_\_\_\_\_

Email \_\_\_\_\_

HAIR COLOR \_\_\_\_\_

EYE COLOR \_\_\_\_\_

SKIN TYPE: combination - oily - dry