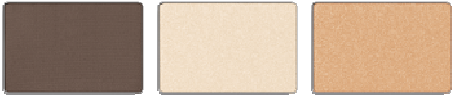


The Bridal Daytime Look

Apply **Honey Spice mineral eye color** to entire eyelids. Sweep on **Espresso mineral eye color** along the lashlines, then blend from the lashlines to the creases. Use **Crystalline mineral eye color** as a highlighter on the brow bones and on the inner corners of the eyes.



Apply **Black eyeliner** and smudge with a sponge-tip applicator or the Eye Smudger Brush. Then, apply two coats of **Mary Kay® Lash Love® Waterproof Mascara in I ♥ black**.



Apply **Sheer Bliss cream blush** to the apples of the cheeks. Blend **Strawberry Cream mineral cheek color** over cream blush. For extra highlight, add **Crystalline mineral eye color** to the tops of the cheekbones.



Apply **Soft Blush lip liner** and **Pink Passion creme lipstick**. Finish with **Fancy Nancy lip gloss** to the center of the lips.



The Five-Minute Face Look

Apply **Mary Kay® Facial Highlighting Pen** to the shadowy areas on the face in a shade that matches your skin tone. Dab on concealer where needed. Apply **Mary Kay® Creme-to-Powder Foundation** just to the areas that need extra coverage.



Sweep on **Chocolate Kiss mineral eye color** to the entire eyelids, from lashlines to the brow bones. Finish with a coat of **Mary Kay® Lash Love® Mascara in I ♥ black**.



Dust **Shy Blush mineral cheek color** on the apples of the cheeks.

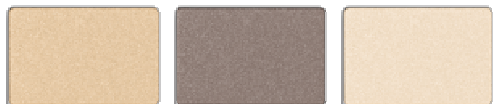


Apply **Neutral lip liner** along the natural lip lines. Then, sweep on **Citrus Flirt True Dimensions® lipstick**.



The Luminous Look

Apply **Moonstone mineral eye color** from lashlines to creases. Sweep on **Granite mineral eye color** in eye creases. Apply **Crystalline mineral eye color** to inside corners and brow bones. Blend all colors well.



Apply **Bronze eyeliner**.



Coat lashes with **Mary Kay® Ultimate Mascara™ in Black**.



Dust **Crystalline mineral eye color** onto cheekbones, bridge of nose and the cupid's bow of the lip. Sweep **Light-Medium bronzing powder** onto the temples and hollows of the cheeks.



Apply **Pink Passion creme lipstick**. Finish with **Cream and Sugar lip gloss** to the center of the lips.



Theater Season Look

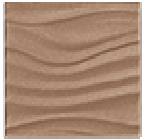
Dust **Rosegold mineral eye color** all over eyelids and into and above creases, and line lower lashlines. Rim eyes all around with **Bronze eyeliner**.



Sweep on **I ♥ Black Lash Love® Lengthening™ Mascara**.



Contour cheekbones with **Light-Medium bronzing powder**.



Line lips with **Neutral lip liner**, then top with **Sizzling Red True Dimensions® lipstick**.



Window-Shopping Look

Dust **Hazelnut mineral eye color** all over eyelids. Contour creases with **Espresso mineral eye color**. Apply **Black eyeliner**.



Sweep on **I ♥ Black Lash Love® Mascara**.



Contour cheekbones with **Light-Medium bronzing powder**. Accent cheeks lightly with **Strawberry Cream mineral cheek color**.



Finish with **Sweet Nectar creme lipstick**.



Work Party Glam Look

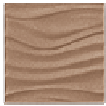
Dust **NEW limited- edition Sapphire Noir eye color palette** in the pink shimmer shade from lashes to brow bones. Line upper lashlines using the darkest gray shade. Layer the lighter purple shade over the liner, pressing as you go. Line lower lashlines with **Violet Ink eyeliner**.



Sweep on **Black Ultimate Mascara™**.



Contour cheekbones with **Light-Medium bronzing powder**.



Line lips with **Clear lip liner**, then top with **NEW limited-edition[†] Ruby Night semi-matte lipstick**.



Polish nails with **NEW limited-edition[†] Night Diamond nail lacquer**.

